

## 2. DAT File for Programming

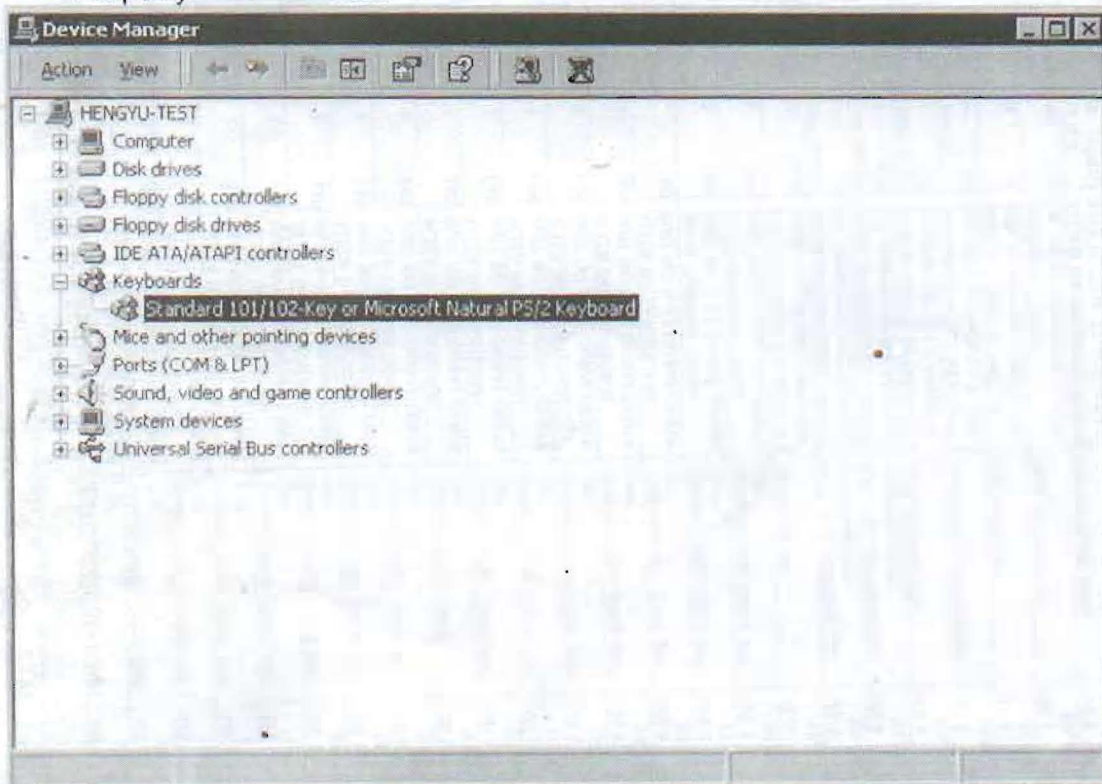
ATTN: W/D

1	Home		F8	F6		F5		Scroll Lock		F3	C		
2													
3	F11		F12	PageDown	Page Up	End	Num Lock	F2		F1	R		
4				34		Pause					Del		
5	Enter	6	7	8	9	0	E				Alt		
6		1	2	3	4	5	Space		F7	F9	Ctrl		
	1	2	3	4	5	6	7	8	9	10	11	12	13

## PS/2 Programmable Keyboard Driver Setup

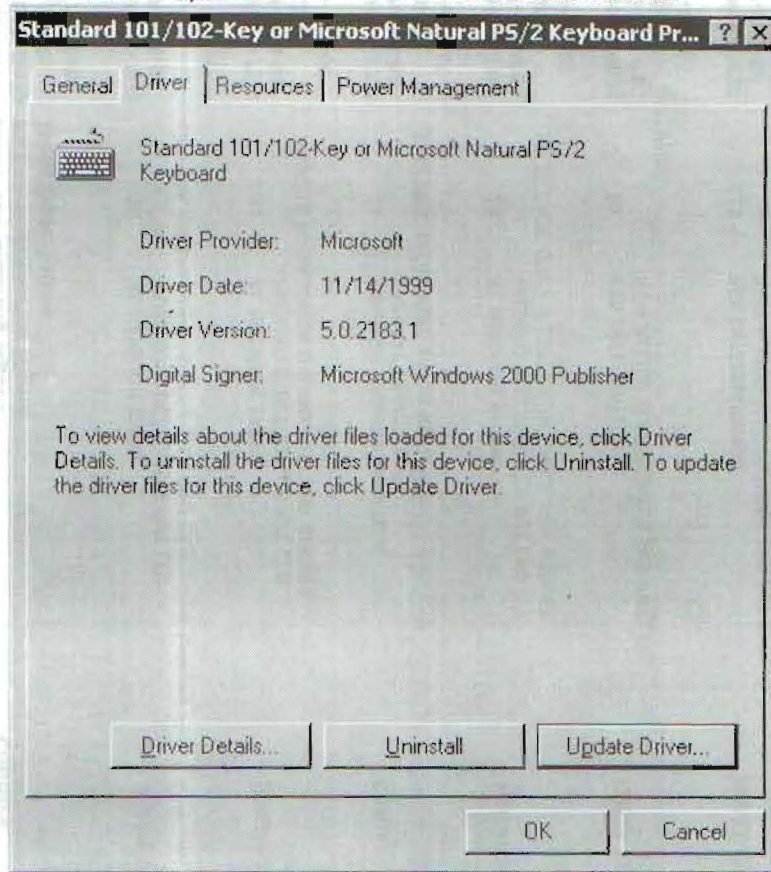
This section is only valid for Windows 2000 and Windows XP. For Windows 9X, Windows Me, no need to do the driver setup for the programmable keyboard. The following instructions are performed in Windows 2000. However, the similar instructions can also be followed in Windows XP.

1. Open the "Device Manager" from the System in Control Panel. Choose the default keyboard driver as below and then right click this driver. Click on "Property" of this driver.





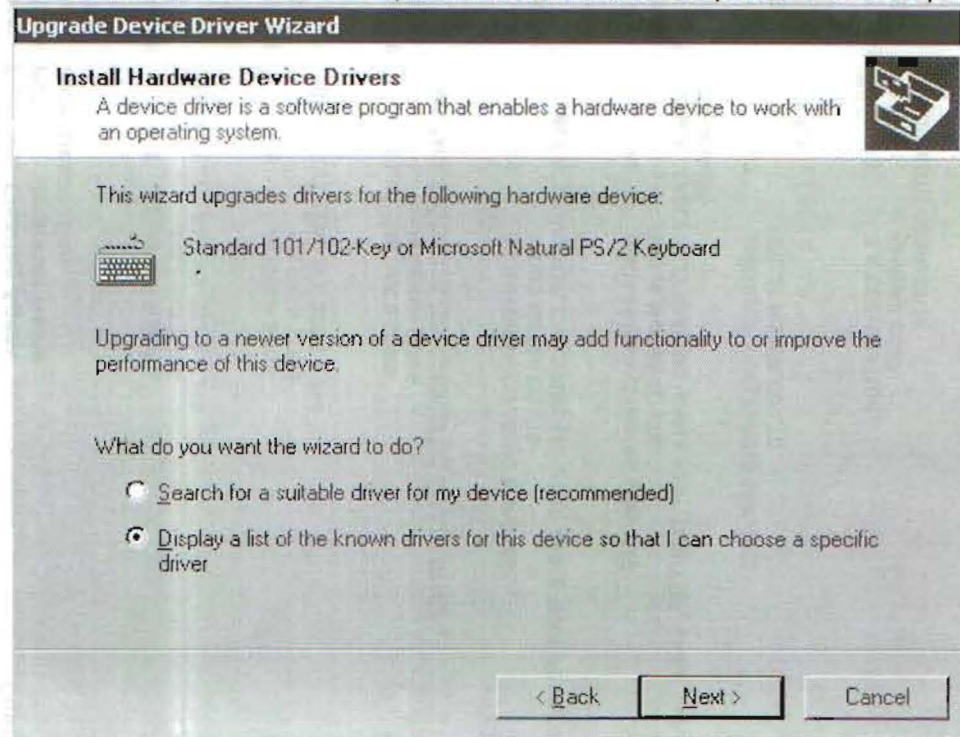
2. Press "Update Driver..." in the screen below.



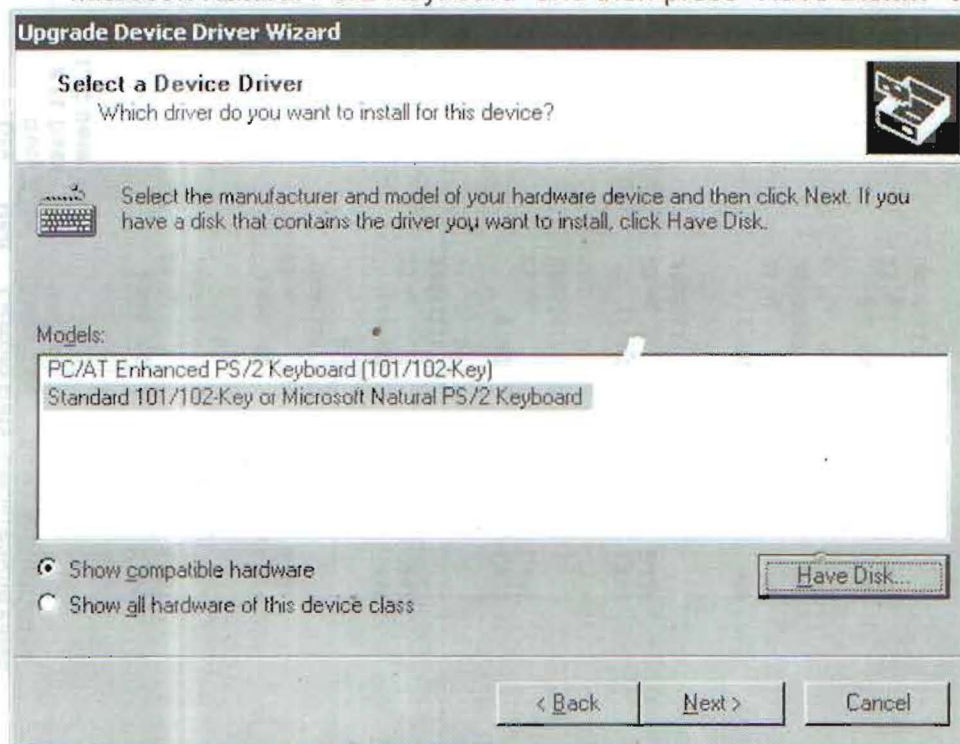
3. Press "Next" to prepare to upgrade the keyboard driver.




4. In the screen below, choose "Display a list of the known drivers for this device so that I can choose a specific driver" and then press "Next" to proceed.

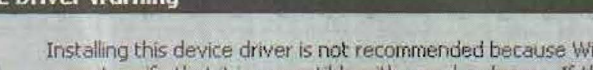


5. In the screen below, select the device driver for the "Standard 101/102-key or Microsoft Natural PS/2 Keyboard" and then press "Have Disk..." to proceed.



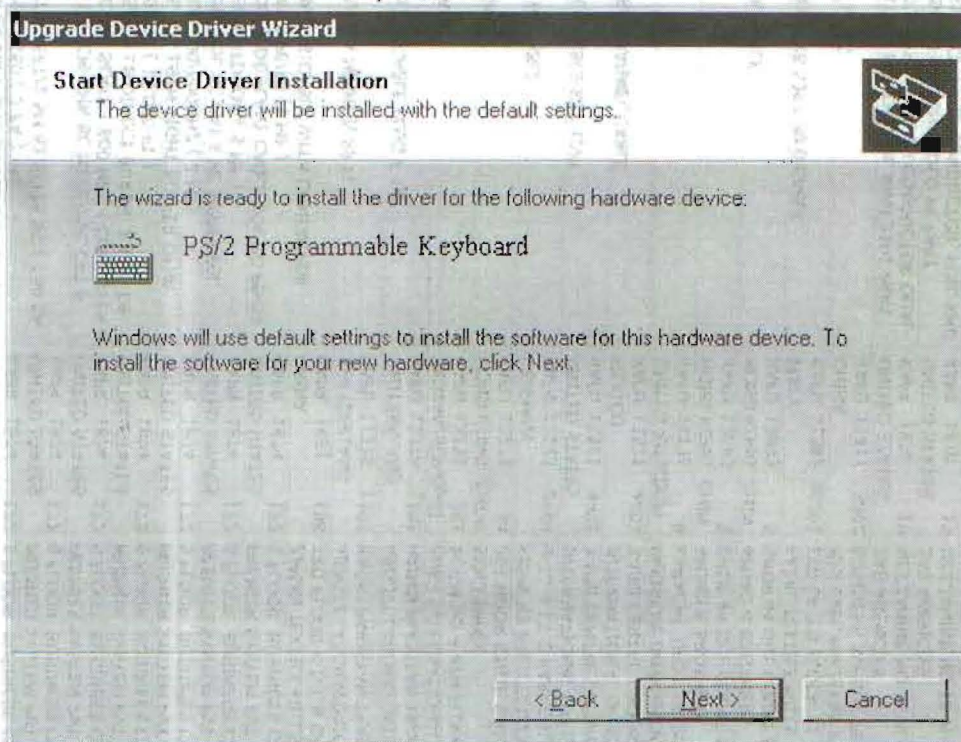


- 
- Install From Disk**
- 
- Insert the manufacturer's installation disk into the drive selected, and then click OK.
- OK
- Cancel
- Copy manufacturer's files from:
- A:\
- Browse...

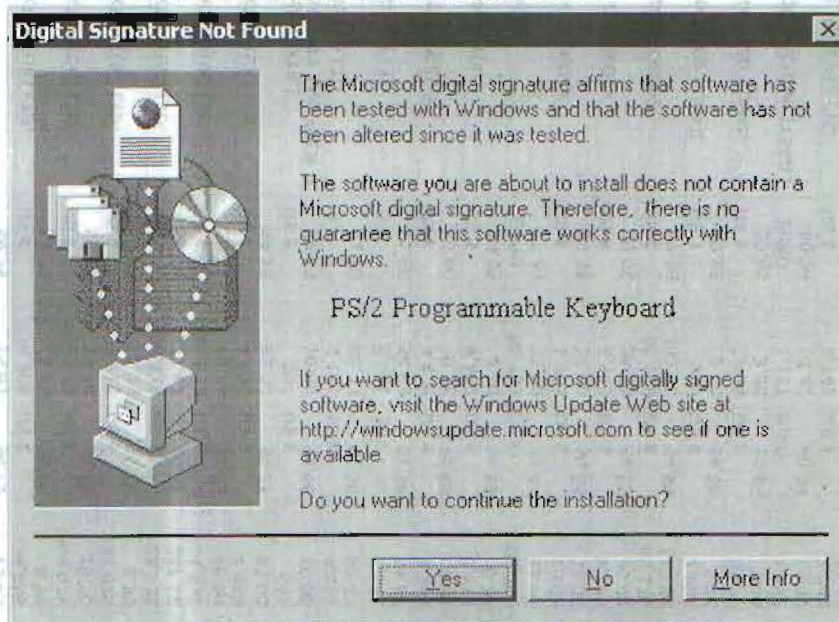
- 



8. The device driver "PS/2 Programmable Keyboard" will be found in the screen below. Press "Next" to proceed.



9. Press "Yes" to continue the installation.





10. When the driver upgrade is finished, the following screen will be come out. Press "Finish" to end the device driver upgrade. Reboot your machine and then the programmable keyboard application can run on the Windows 2000 and Windows XP.

